

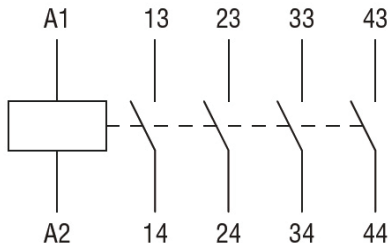


Type	Coil	Contacts			Weight	Installation
		Current	NO	NC		
11BG0022D024	24 Vdc, 3.2 W	10 A	2	2	6.2 oz	DIN Rail or Panel Mount
11BG0031D024	24 Vdc, 3.2 W	10 A	3	1	6.2 oz	
11BG0040D024	24 Vdc, 3.2 W	10 A	4	0	6.2 oz	
11BG0022L024	24 Vdc, 2.3 W	10 A	2	2	6.2 oz	
11BG0031L024	24 Vdc, 2.3 W	10 A	3	1	6.2 oz	
11BG0040L024	24 Vdc, 2.3 W	10 A	4	0	6.2 oz	
11BG0022A12060	120 Vac	10 A	2	2	6 oz	
11BG0031A12060	120 Vac	10 A	3	1	6 oz	
11BG0040A12060	120 Vac	10 A	4	0	6 oz	
11BG0022A23060	230 Vac	10 A	2	2	6 oz	
11BG0031A23060	230 Vac	10 A	3	1	6 oz	
11BG0040A23060	230 Vac	10 A	4	0	6 oz	

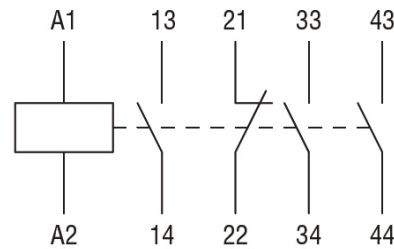
Technical Data	AC Coils	DC Coils
Wire Size:	18-12 AWG	
Torque:	7.1-8.9 In-lbs	
Operating Temperature:	-40~+60 °C	
Storage Temperature:	-55~+70 °C	
Rated Control Voltage	12-575 V@ 60 Hz	6-250 V
Operating Voltage Limits (%Us)	Pick-Up 75-115	Pick-Up 75-115
	Drop-Out 20-55	Drop-Out 10-20
Operating Times	Closing NO 12-21 ms	Closing NO 18-25 ms
	Opening NO 9-18 ms	Opening NO 2-3 ms
	Closing NC 17-26 ms	Closing NC 3-5 ms
	Opening NC 7-17 ms	Opening NC 11-17 ms
Contact Life	20 million mechanical cycles	
Maximum Operating Rate	3600 mechanical cycles /hour	

## Wiring Diagrams:

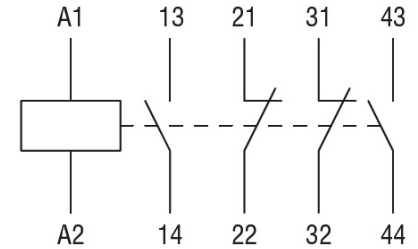
**BG00 40 A (D,L)**



**BG00 31 A (D,L)**



**BG00 22 A (D,L)**



## Dimensions:

